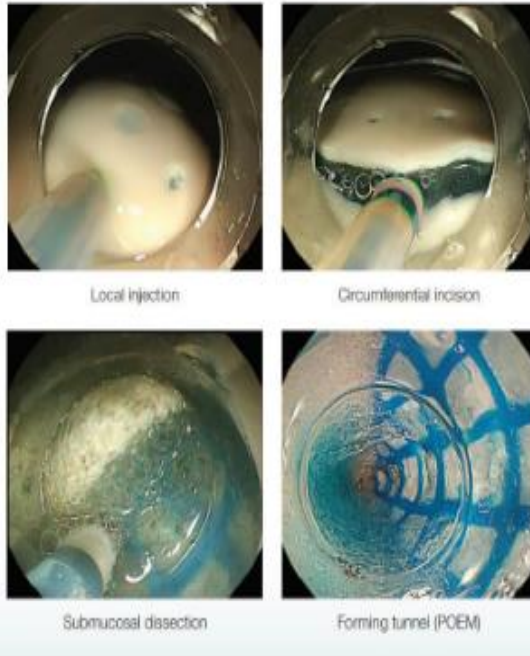
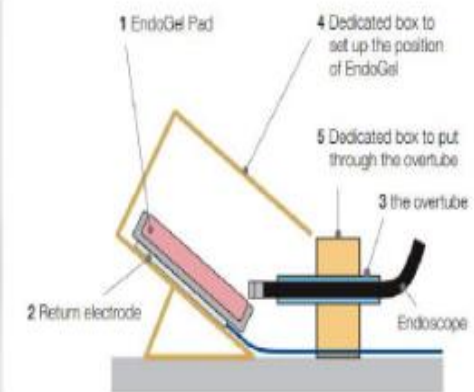


ENDOSCOPIC IMAGE & SET UP

Endoscopic Image



Endoscopic Image



The EndoGel® matrixbowl (size 14 x 18.5 x 2.5 cm) allows for 6 – 9 ESD training procedures (depending on the sizes of the ESD). Made with non-biological materials, which eliminates the risk of infection. Shelf life of the original packaging is up to 6 months.

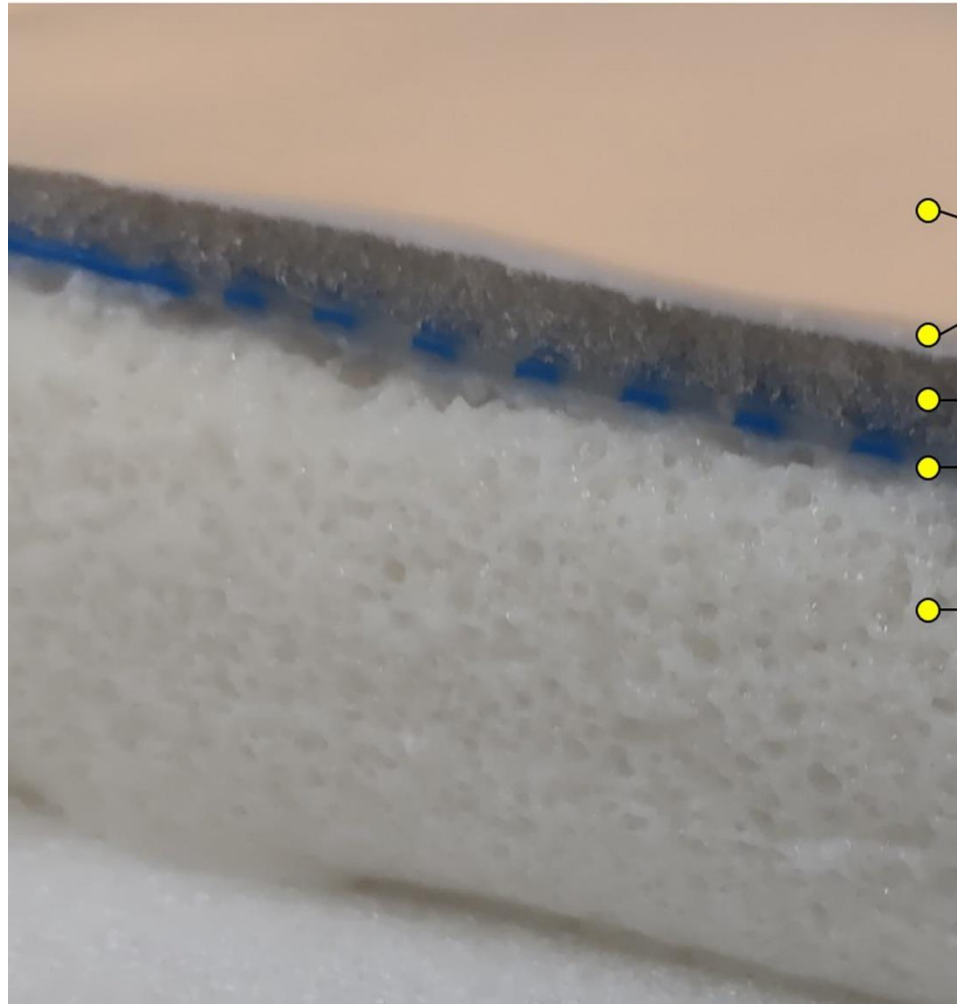
Matrix type	Article No.	approx.. price (netto)
ESD type	70100156737	410.- €
ESD/POEM type	70100156736	475 €

To order from:

FUJIFILM Europe GmbH, Balcke-Dürr-Allee 6, DE-40882 Ratingen

email webmaster_feg@fujifilm.com ph. +49 2102 53640

The EndoGel® matrix simulates human stomach wall layers



【ESD model】

- Mucosa + muscularis mucosa
- Submucosa
- Pattern of tunica muscularis
- Tunica muscularis